

INJURY CONTROL COBRE NEWSLETTER

- * Injury Control COBRE Investigator Updates
- * Funding Opportunity
- * RPP and ICDI Core Updates
- * Injury Control COBRE Researchers Present at NISBRE 2024

Injury Control COBRE Welcomes New Pilot Project Leader: Sarah Keene, MD "Predicting Clinical Outcomes in Older Adults with Rib Fractures"



Sarah Keene, MD, is an emergency medicine physician specializing in geriatric care and an assistant professor at the Warren Alpert School of Medicine. She is renowned for her expertise in managing complex injuries in older adults. Her research focuses on predicting clinical outcomes in older adults with rib fractures, aiming to address the challenges in managing such injuries and reducing associated morbidity and mortality rates while optimizing healthcare resource utilization.

Dr. Keene's study will investigate the clinical trajectories of older adults presenting with rib fractures at a regional level I trauma center, aiming to identify key patient characteristics, injury mechanisms, and physiological markers correlating with adverse clinical outcomes. She plans to characterize the patient population and explore relationships between injury severity, physiological parameters, and adverse events.

The ultimate goal of Dr. Keene's pilot project is to develop a robust risk-stratification tool capable of accurately predicting which older adults with rib fractures are at high risk of developing complications necessitating intensive care, revolutionizing clinical decision-making, and optimizing resource allocation. She anticipates validating the tool and evaluating its feasibility among Emergency Medicine physicians and trauma surgeons, aiming to improve outcomes and set new standards in geriatric trauma management through dedication and innovation.

New Injury Control COBRE Website Launched: Explore Now at injurycontrolcobre.org

Discover the latest resources, research, and updates on injury control at our newly launched website. Visit now to learn more and stay informed!

Dr. Mary Kathryn Cancelliere Graduates off COBRE Grant with K Award

Injury Control COBRE Congratulates Dr. Mary Kathryn Cancelliere on Graduating off the COBRE Grant and receiving K Award



Mary Kathryn Cancelliere, PhD, is a pediatric psychologist and research scientist in the Department of Child and Adolescent Psychiatry at Rhode Island Hospital and assistant professor (research) in the Department of Psychiatry and Human Behavior at the Alpert Medical School of Brown University. Overall, Dr. Cancelliere's program of research aims to develop interventions and prevention protocols while leveraging digital health technology for youth injury prevention and control during acute psychiatric risk (i.e., suicidal and non-suicidal self-injurious behaviors) and their families in the Pediatric Emergency Department, Psychiatric Emergency Services.

Dr. Cancelliere's research focuses on addressing suicidal and non-suicidal self-injurious behavior (SSIB) in youth aged 10 to 14 years. **The purpose of this study is to refine and pilot a brief, culturally and identity-sensitive, adaptive emergency department (ED) intervention via Sequential Multiple Assignment Randomized Trial (SMART) design that targets individual and systemic barriers to care to increase linkage to subsequent community-based mental health (MH) care for youth 10 to 14 years after an ED admission and referral.**

This intervention is designed to increase subsequent community-based mental health care for youth following an ED admission and referral. The research focuses on improving mental health literacy, communication, and engagement, with primary outcomes including increased mental health care attendance, reduced SSIB symptoms, and enhanced engagement in therapeutic mechanisms. This innovative approach aligns with the NIMH Strategic Plan Objectives to improve the efficiency, effectiveness, and reach of mental health services, particularly in diverse communities and populations.

Funding Opportunity Pilot Project Leaders and Research Project Leaders

The Rhode Island Hospital (RIH) Injury Control COBRE is pleased to announce two funding opportunities. Applicants must be investigators with Rhode Island faculty appointments (residents and fellows are not eligible).

- 1. Pilot project proposals:** Applicants must be from Rhode Island based affiliates. Pilot studies will last up to 2 years with a total budget of up to \$50,000. Four pilot studies will be funded annually.
- 2. Research project proposals:** Applicants must hold a faculty-equivalent position at the time of funding and be eligible for NIH funding but not yet have received R01-level funding or the equivalent or have concurrent funding from another IDeA program (e.g., other COBREs, Advance CTR funding).

[More Info and Apply Here](#)

Research to Practice and Policy (RPP) Core Update

The Injury Control Research to Practice and Policy Core Welcomes New Dissemination and Implementation (D/I) Faculty Lead: Ariana Albanese, Ph.D.



Message from Ariana Albanese, Ph.D.:

After gaining two years of specialized training and mentorship in implementation science as a postdoctoral fellow housed within the Brown Research on Implementation and Dissemination to Guide Evidence Use (BRIDGE) Program, I have transitioned to Assistant Professor within the BRIDGE Program. As part of BRIDGE, I deliver training sessions, provide consultations, and mentor others in all areas of implementation science. I conduct seminars on implementation topics and assist researchers in creating methods tailored to their implementation science research questions. My own program of research is focused on improving behavioral health outcomes, with a particular focus on behavioral health during pregnancy and postpartum. During my time at BRIDGE thus far, I have contributed to multiple implementation science-focused research projects, including a project focused on reducing food insecurity using produce prescription programs (MPIs Frank and Tovar) and a project focused on using home visitors to address perinatal sleep (PI: Carskadon). As an implementation science methodologist, my research has covered various content areas and employed multiple methods, such as community engagement, formative evaluation, the selection and application of implementation theories, models, and frameworks, and the assessment of implementation outcomes. I also possess methodological expertise in qualitative and mixed methods, including rapid qualitative methods which are often used in implementation science. I have gained this expertise through expert mentorship on several projects as well as through my participation in the Brown University Qualitative Science & Methods Training Program. I look forward to lending my expertise to the RPP Core.

How might I help folks within the COBRE?:

- Provide individual consultations related to the use of implementation science methods and theory in the context of your research. Example consultation questions might include:
 - What is implementation science and how might I use it?
 - What theory model or framework should I use?
 - What methods might be most appropriate for my project?
- I am currently developing materials for a seminar series about implementation science topics

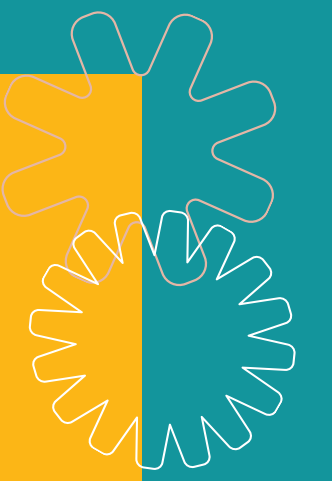
Contact: ariana_albanese@brown.edu

Injury Control Digital Innovation (ICDI) Core Update

The Injury Control Digital Innovation Core is excited to announce that two new faculty members have joined the core:

Dr. Stephanie Goldstein and Dr. Hamish Fraser

More to come next month!



Digital Health Pitch: Apply Now for 2024 Competition!

Dear Brown University and Lifespan Community,

Are you ready to innovate in digital health? Apply now for the **2024 Digital Health Pitch Competition!**

Co-sponsored by the Brown-Lifespan Center for Digital Health and Injury Control (COBRE), this competition offers up to \$25,000 in seed funding and mentorship for top teams. We invite applications from faculty, postdocs, residents, graduate students, and clinicians.

Key Dates:

- **Application Due:** August 16th, 2024
- **Pitch Competition:** September 26th, 2024

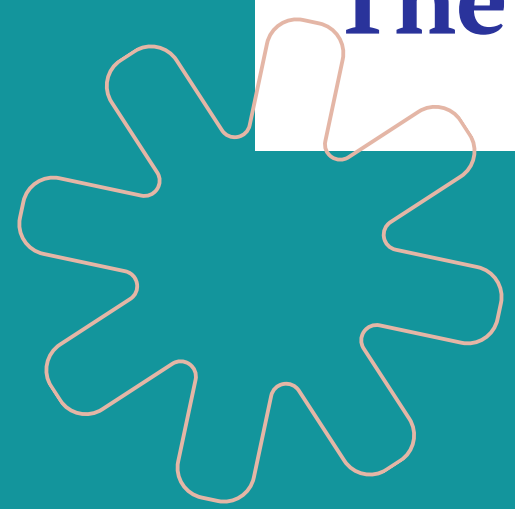
Complete the application in just 15 minutes to showcase your innovative idea and team.

Apply Here: [Digital Health Pitch Competition Application](#)

For questions or further details, please contact the Center for Digital Health at DigitalHealth@Brown.edu.

Let's drive digital health innovation forward!

**Best regards,
The Digital Health Pitch Competition Team**



SAVE THE DATE!

From the Brown-Lifespan Center for Digital Health (CDH), in partnership with the Injury Control COBRE

Digital Health Pitch Competition

Support innovative projects focused on injury control and prevention!

Thursday, September 26th

Venture Café Providence, 225 Dyer Street, Providence, RI

This event is part of the Innovation@Brown Showcase.

Scan or click QR Code to learn more!



COBRE Research Project Leaders Present at NISBRE 2024

Injury Control COBRE is proud to announce that two of our project leaders, Dr. Stephanie Ruest and Dr. Mary Kathryn Cancelliere, presented their groundbreaking research at the 9th National IDeA Symposium of Biomedical Research Excellence (NISBRE) 2024 Meeting in Washington, DC.



"Identifying Emergency Department Providers' Concern for Potential Child Abuse Using Natural Language Processing"

Authors: Stephanie Ruest, MD, MPH, William Rudman M.Sc.

Stephanie Ruest, MD, MPH, FAAP

Assistant Professor of Emergency Medicine and Assistant Professor of Pediatrics, Research Scholar Track, Warren Alpert Brown School of Medicine, Hasbro Children's Hospital

Dr. Stephanie Ruest's research leverages natural language processing (NLP) to identify emergency department (ED) concerns for child abuse in young children with fractures, often missed by traditional ICD9/10 codes or formal CAP (Child Abuse Pediatricians) consultation notes. The retrospective observational study examined 3,089 pediatric fracture cases in a pediatric ED from 2015 to 2021. Findings revealed that EDPs raised abuse concerns in 10.3% of encounters, with significant differences in age, race, insurance, and fracture types. Notably, 62.8% of these cases had formal consultations, while NLP identified an additional 37.2% through discussions without documented consultation notes. This methodology improves the detection of potential abuse, particularly in cases involving rib, femur, and skull fractures.



"The Development of an Emergency Department Family Navigator Protocol to Reduce Risk of Suicide and Self-injurious Behavior"

Authors: Mary Kathryn Cancelliere, PhD, et al.

Mary Kathryn Cancelliere, PhD

Assistant Professor of Psychiatry and Human Behavior (Research), Warren Alpert Medical School; ; Research Scientist, Hasbro Children's Hospital

Dr. Mary Kathryn Cancelliere's research addresses the surge in suicide and self-injurious behavior (SSIB) among youth aged 10-14. Notably, 73% of these youths seen in the emergency department (ED) are discharged, with less than 40% receiving follow-up mental health care within 30 days. The study evaluates the Family Navigator intervention, designed to reduce SSIB risk, increase linkage to MH care, and reduce ED re-admissions. The trial involved 17 youth-caregiver dyads recruited from an academic medical center's ED. Findings showed significant MH symptoms and impairments among youth, with high satisfaction reported by 79% of caregivers participating in the intervention. Next steps include a pilot RCT to test the intervention's feasibility, accessibility, and effectiveness.

