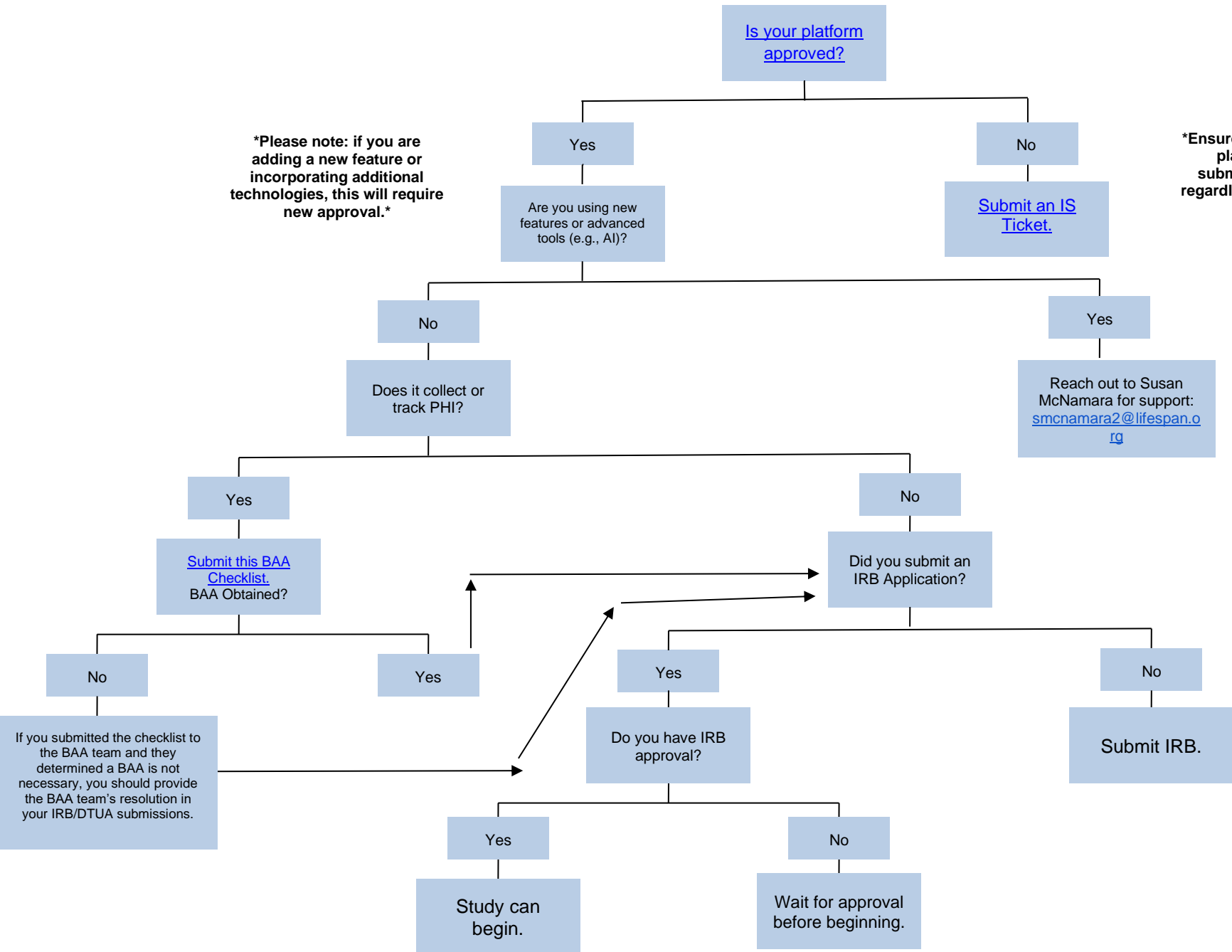


# Brown University Health Research Approval IS Vendors and Platforms Flow Chart

For assistance with reviewing and discussing the platform, please submit an IVANTI IS consultation ticket. This will ensure your request is directed to the appropriate team for support.

**\*Please note: if you are adding a new feature or incorporating additional technologies, this will require new approval.\***

**\*Ensure IS approval for all platforms before submitting to the IRB, regardless of PHI or BAA.\***



**Seeking more tips and suggestions?** Check out the [General Tip Sheet!](#)

For further assistance, the **Injury Control Digital Innovation (ICDI) Core** offers referrals and support throughout this process. You can schedule a one-on-one consultation [here](#) for personalized guidance.

Additionally, you can reach out to **Susan McNamara** for Research IS support: [smcnamara2@lifespan.org](mailto:smcnamara2@lifespan.org).